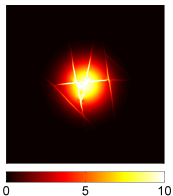


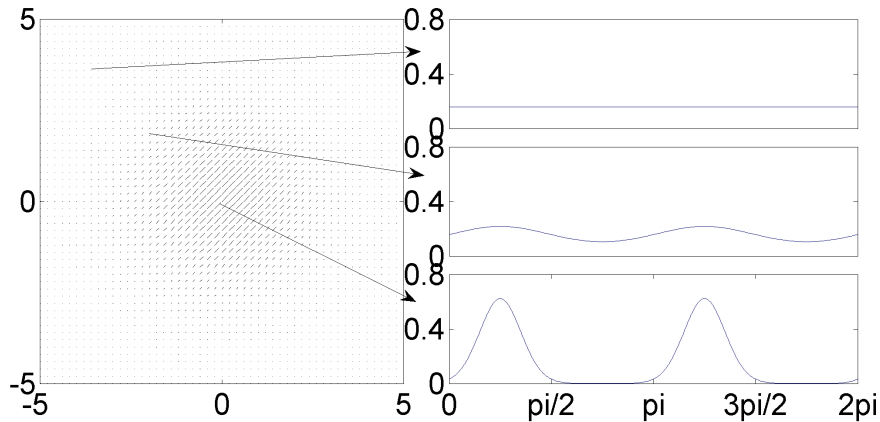
Anisotropic Diffusion

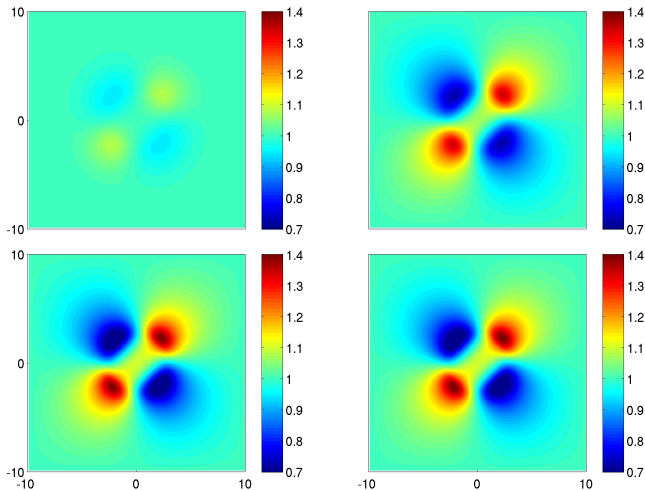
Thomas Hillen, Kevin J Painter

University of Alberta / Heriot Watt University



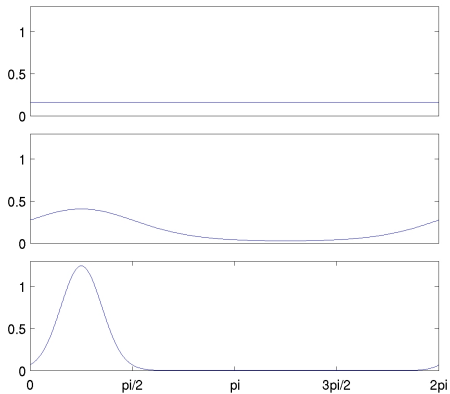
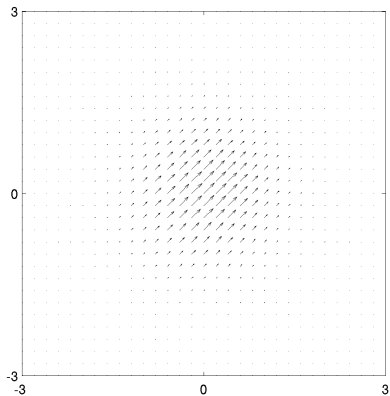
Example 1: Nonoriented

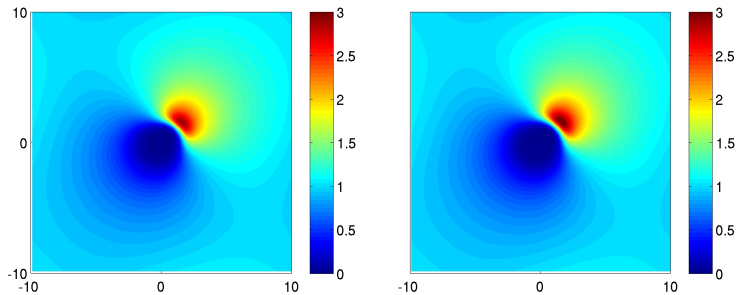




(A) $s = 0.1, \mu = 0.01$, (B) $s = 1, \mu = 1$, (C) $s = 10, \mu = 100$
 (D) parabolic limit.

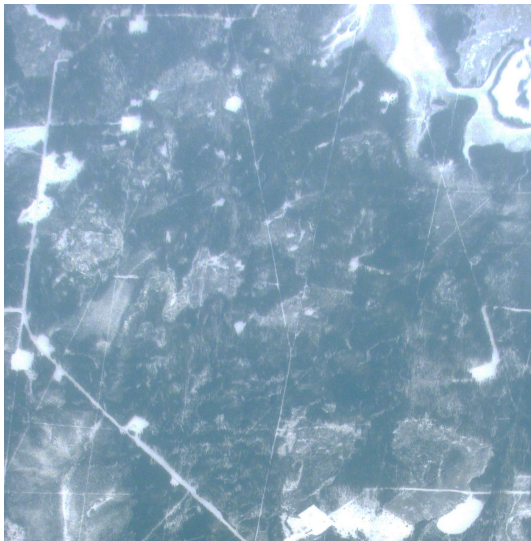
Example 2: Oriented

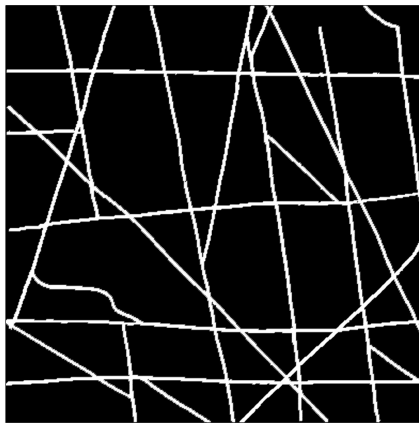


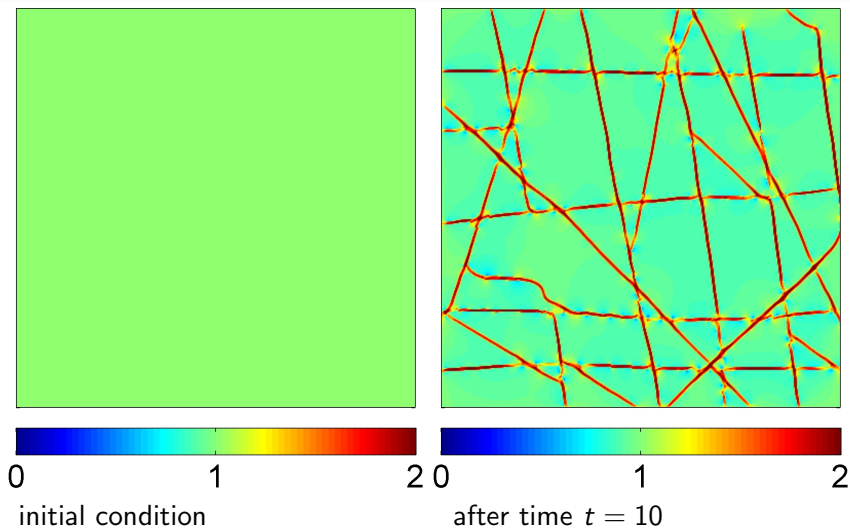


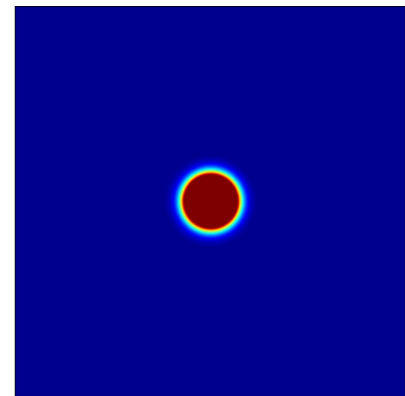
(A) $s = 10, \mu = 100$, (B) parabolic limit.

Example 3: Seismic lines

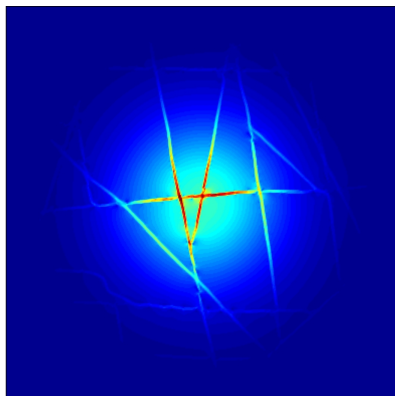








0 5 10
initial conditions



0 5 10
after time $t = 5$